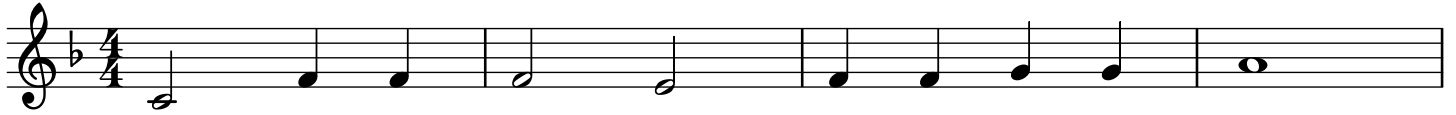
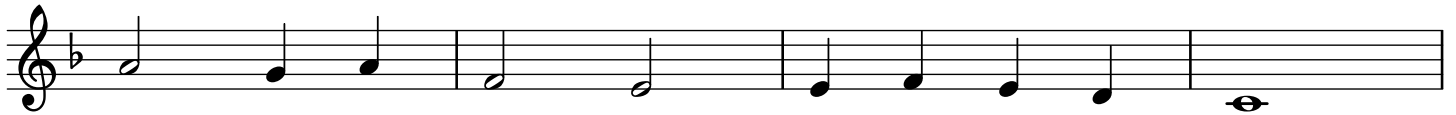


Draw Near and Take the Body of Our Lord

Neale / ANIMA CHRISTI



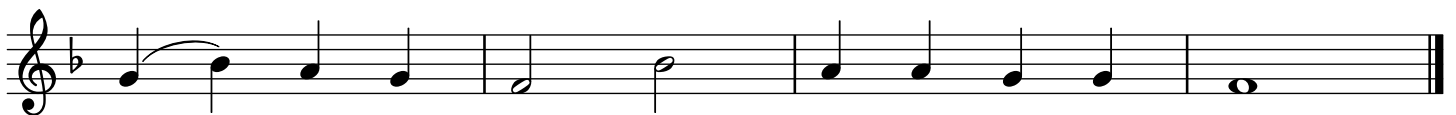
1. Draw near and take the Bod - y of our Lord,
2. Sal - va - tion's giv - er, Christ the on - ly Son,
3. Vic - tims were of - fered by the Law of old
4. Ap - proach ye then with faith - ful hearts sin - cere,
5. With heav'n - ly bread makes them that hun - ger whole,



1. and drink the ho - ly Blood for you out - poured;
2. by that his Cross and Blood the vic - t'ry won;
3. that, in a type, cel - es - tial mys - t'ries told;
4. and take the safe - guard of sal - va - tion here;
5. gives liv - ing wa - ters to each thirst - y soul.



1. saved by that Bod - y, hal - lowed by that Blood,
2. off - ered was he for great - est and for least,
3. he, ran - som - er from death and light from shade,
4. he that in this world rules his saints and shields,
5. Al - pha, O - me - ga, un - to whom shall bow,



1. where - by re - freshed, we of - fer thanks to God.
2. him - self the Vic - tim and him - self the Priest.
3. giv - eth his ho - ly grace, his saints to aid.
4. to all be - liev - ers life e - ter - nal yields.
5. all on the last day; he is with us now.

Inspiration: "Sancte venite, Corpus Christi sumite" from the "Antiphony of Bennchar", 7th cent.
Lyrics: 10.10.10.10; John M. Neale, 1818-1866, in his "Medieval Hymns and Sequences", 1851.
Music: ANIMA CHRISTI; William J. Maher, SJ, 1823-1877, in "Mission Hymns", 1864.